

Brought to you by the North Carolina Library
Association's Government Resources Section.
Join us! [http://www.nclaonline.org/government-
resources](http://www.nclaonline.org/government-resources)



Historical Economic Data Sources & Economic Time Travel

August 21, 2013
Pamela Campbell

pamela.d.campbell@stls.frb.org
Federal Reserve Bank of St. Louis

The views expressed in the presentation are my own and not the views of the Federal Reserve Bank of St. Louis or the Federal Reserve System.

Ohio.com > News >

Ohio unemployment rate remains at 7.2 percent for July

By Katie Byard
Beacon Journal business writer

Published: August 16, 2013 - 10:28 AM | Updated: August 17, 2013 - 01:46 AM

Ohio gained 5,300 jobs in July, but continues to lag the nation for job growth. The state data released Friday also shows that June's job loss was not as big as initially thought. The state released revised figures, showing that 8,400 jobs were lost in June, instead of 12,500.



Why don't they get it right the first time?

- ▶ Economic data are made from estimates.
- ▶ Over time, more information becomes available, and the estimates change.

Ohio.com > News >

Ohio unemployment rate remains at 7.2 percent for July

By Katie Byard
Beacon Journal business writer

Published: August 16, 2013 - 10:28 AM | Updated: August 17, 2013 - 01:46 AM

Ohio gained 5,300 jobs in July, but continues to lag the nation for job growth. The state data released Friday also shows that June's job loss was not as big as initially thought. The state released revised figures, showing that 8,400 jobs were lost in June, instead of 12,500.




What happens to the old data?

- ▶ In most cases, they get overwritten, and even forgotten.

Labor Force Statistics from the Current Population Survey

Series Id: LNS14000000
Seasonally Adjusted
Series title: (Seas) Unemployment Rate
Labor force status: Unemployment rate
Type of data: Percent or rate
Age: 16 years and over

Download:  .xls

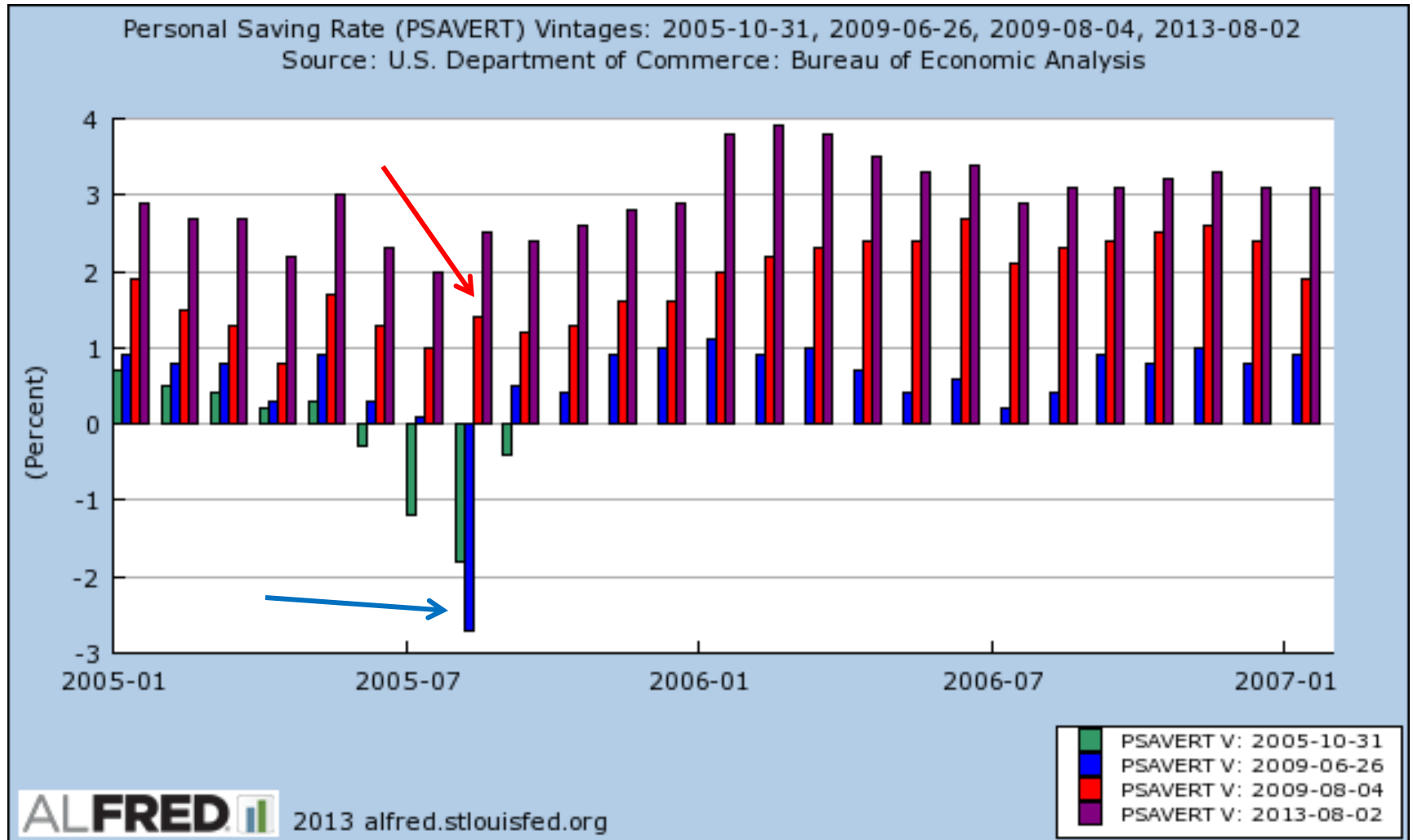
| Year | Jan | Feb | Mar | Apr | May | Jun | Jul | Aug | Sep | Oct | Nov | Dec | Annual |
|------|-----|-----|-----|-----|-----|-----|-----|-----|-----|------|-----|-----|--------|
| 2003 | 5.8 | 5.9 | 5.9 | 6.0 | 6.1 | 6.3 | 6.2 | 6.1 | 6.1 | 6.0 | 5.8 | 5.7 | |
| 2004 | 5.7 | 5.6 | 5.8 | 5.6 | 5.6 | 5.6 | 5.5 | 5.4 | 5.4 | 5.5 | 5.4 | 5.4 | |
| 2005 | 5.3 | 5.4 | 5.2 | 5.2 | 5.1 | 5.0 | 5.0 | 4.9 | 5.0 | 5.0 | 5.0 | 4.9 | |
| 2006 | 4.7 | 4.8 | 4.7 | 4.7 | 4.6 | 4.6 | 4.7 | 4.7 | 4.5 | 4.4 | 4.5 | 4.4 | |
| 2007 | 4.6 | 4.5 | 4.4 | 4.5 | 4.4 | 4.6 | 4.7 | 4.6 | 4.7 | 4.7 | 4.7 | 5.0 | |
| 2008 | 5.0 | 4.9 | 5.1 | 5.0 | 5.4 | 5.6 | 5.8 | 6.1 | 6.1 | 6.5 | 6.8 | 7.3 | |
| 2009 | 7.8 | 8.3 | 8.7 | 9.0 | 9.4 | 9.5 | 9.5 | 9.6 | 9.8 | 10.0 | 9.9 | 9.9 | |
| 2010 | 9.8 | 9.8 | 9.9 | 9.9 | 9.6 | 9.4 | 9.5 | 9.5 | 9.5 | 9.5 | 9.8 | 9.3 | |
| 2011 | 9.1 | 9.0 | 8.9 | 9.0 | 9.0 | 9.1 | 9.0 | 9.0 | 9.0 | 8.9 | 8.6 | 8.5 | |
| 2012 | 8.3 | 8.3 | 8.2 | 8.1 | 8.2 | 8.2 | 8.2 | 8.1 | 7.8 | 7.9 | 7.8 | 7.8 | |
| 2013 | 7.9 | 7.7 | 7.6 | 7.5 | 7.6 | 7.6 | 7.4 | | | | | | |

What happens to the old data?

- ▶ In most cases, they get overwritten, and even forgotten.

| Labor Force Statistics from the Current Population Survey | | | | | | | | | | | | | |
|---|-----------|-------------|-----------|-----------|-----|-----|-----|-----|-----|-----|-----|-----|--|
| Series Id: | | LNS14000000 | | | | | | | | | | | |
| Seasonally Adjusted | | | | | | | | | | | | | |
| HOUSEHOLD DATA | | | | | | | | | | | | | |
| Summary table A. Household data, seasonally adjusted | | | | | | | | | | | | | |
| [Numbers in thousands] | | | | | | | | | | | | | |
| Category | July 2011 | May 2012 | June 2012 | July 2012 | | | | | | | | | |
| Employment status | | | | | | | | | | | | | |
| Civilian noninstitutional population..... | 239,671 | 242,966 | 243,155 | 243,354 | | | | | | | | | |
| Civilian labor force..... | 153,358 | 155,007 | 155,163 | 155,013 | | | | | | | | | |
| Participation rate..... | 64.0 | 63.8 | 63.8 | 63.7 | | | | | | | | | |
| Employed..... | 139,450 | 142,287 | 142,415 | 142,220 | | | | | | | | | |
| Employment-population ratio..... | 58.2 | 58.6 | 58.6 | 58.4 | | | | | | | | | |
| Unemployed..... | 13,908 | 12,720 | 12,749 | 12,794 | | | | | | | | | |
| Unemployment rate..... | 9.1 | 8.2 | 8.2 | 8.3 | | | | | | | | | |
| Not in labor force..... | 86,313 | 87,958 | 87,992 | 88,340 | | | | | | | | | |
| Unemployment rates | | | | | | | | | | | | | |
| Total, 16 years and over..... | 9.1 | 8.2 | 8.2 | 8.3 | | | | | | | | | |
| 2010 | 9.8 | 9.8 | 9.9 | 9.9 | 9.6 | 9.4 | 9.5 | 9.5 | 9.5 | 9.5 | 9.8 | 9.3 | |
| 2011 | 9.1 | 9.0 | 8.9 | 9.0 | 9.0 | 9.1 | 9.0 | 9.0 | 9.0 | 8.9 | 8.6 | 8.5 | |
| 2012 | 8.3 | 8.3 | 8.2 | 8.1 | 8.2 | 8.2 | 8.2 | 8.1 | 7.8 | 7.9 | 7.8 | 7.8 | |
| 2013 | 7.9 | 7.7 | 7.6 | 7.5 | 7.6 | 7.6 | 7.4 | | | | | | |

Was there a negative saving rate in 2005?



Changes to the NIPAs

- ▶ A comprehensive revision of the National Income and Product Accounts (NIPAs), was released on July 31, 2009.
- ▶ “Upward revisions to disposable personal income (DPI) beginning with 1994 are larger than upward revisions to personal outlays, resulting in upward revisions to personal saving and to the personal saving rate (personal saving as a percentage of DPI) (table 2).”
 - ▶ Eugene P. Seskin and Shelly Smith, “Improved Estimates of the National Income and Product Accounts: Results of the 2009 Comprehensive Revision,” *Survey of Current Business* (September 2009): 15
(http://www.bea.gov/scb/pdf/2009/09%20September/0909_nipa_text.pdf)



Why would I want to find the vintage data?

- ▶ Decisions are made based on data available at the time.



| | | | |
|--------|--------|----|--------|
| 1.5738 | 1.5678 | 34 | 1.721 |
| 1.5751 | 1.5665 | 35 | 1.7 |
| 1.5767 | 1.5649 | 36 | 1.7 |
| 1.5785 | 1.5632 | 37 | 1.7 |
| 1.5805 | 1.5611 | 38 | 1.7022 |
| 1.5828 | 1.5589 | 39 | 1.7633 |
| 1.5854 | 1.5564 | 40 | 1.7748 |
| 1.5882 | 1.5537 | 41 | 1.7868 |
| 1.5913 | 1.5507 | 42 | 1.7992 |
| 1.5946 | 1.5476 | 43 | 1.8122 |
| | | 44 | 1.8256 |
| | | | 1.8200 |



How do I find vintage data?

- ▶ First option: go to the source.



The screenshot shows the Bureau of Labor Statistics website. The top navigation bar includes the logo, the text "UNITED STATES DEPARTMENT OF LABOR" and "BUREAU OF LABOR STATISTICS", and links for "A to Z Index", "FAQs", "About BLS", "Contact Us", "Subscribe to E-mail Updates", and "GO". Below the navigation bar are links for "Home", "Subject Areas", "Databases & Tools", "Publications", "Economic Releases", and "Beta". A search bar is located on the right side.

The main content area features a list of news releases on the left and a central menu of categories on the right. The "ARCHIVED NEWS RELEASES" link in the central menu is circled in red. The right sidebar contains a "MONTHLY LABOR REVIEW" section with a 3D house icon and a line graph, and a text block titled "The relationship between the housing and labor market crises and doubling up: an MSA-level analysis, 2005–2011".

UNITED STATES DEPARTMENT OF LABOR
BUREAU OF LABOR STATISTICS

A to Z Index | FAQs | About BLS | Contact Us |

Home | Subject Areas | Databases & Tools | Publications | Economic Releases | Beta


AUG 16 Productivity increased 1.4% in July 2013; unit labor costs in manufacturing fell 0.2%
[HTML](#) | [PDF](#)

AUG 15 CPI for all urban consumers rose 0.2 percent in July 2013; energy rose 0.5 percent
[HTML](#) | [PDF](#)

08/15/2013 Real average hourly earnings increased 0.1 percent in July 2013
08/14/2013 PPI for finished goods unchanged in July; finished core rises 0.1%

LATEST RELEASES »
MAJOR ECONOMIC INDICATORS »
SCHEDULES FOR NEWS RELEASES »
By Month
By News Release
Current Year
Prior Years
ARCHIVED NEWS RELEASES »
EMPLOYMENT & UNEMPLOYMENT »
Monthly
Quarterly, annual, and other
INFLATION & PRICES »
PAY & BENEFITS & WORKPLACE INJURIES »
PRODUCTIVITY & TECHNOLOGY »
EMPLOYMENT PROJECTIONS »
INTERNATIONAL PROGRAMS »
REGIONAL NEWS RELEASES »

MONTHLY LABOR REVIEW



The relationship between the housing and labor market crises and doubling up: an MSA-level analysis, 2005–2011

BLS Information

SUBJECT AREAS

- [INFLATION & PRICES](#) ▸
- [SPENDING & TIME USE](#) ▸
- [UNEMPLOYMENT](#) ▸
- [EMPLOYMENT](#) ▸
- [PAY & BENEFITS](#) ▸
- [PRODUCTIVITY](#) ▸
- [WORKPLACE INJURIES](#)
- [INTERNATIONAL](#) ▸
- [REGIONAL OFFICES](#) ▸
- [PROGRAMS A-Z](#)

- RESOURCES FOR**
- [BUSINESS LEADERS](#)
- [CONSUMERS](#)
- [ECONOMISTS](#)
- [INVESTORS](#)
- [JOBSEEKERS](#)
- [MEDIA](#)

Archived News Releases

Caution

Data in archived news releases may have been revised in subsequent releases. The latest data, including any revisions, may be obtained from the databases accessible on the [BLS program homepages](#).

Major Economic Indicators

- [Consumer Price Index](#)
- [Employment Cost Index](#)
- [Employment Situation](#)
- [Producer Price Index](#)
- [Productivity and Costs](#)
- [Real Earnings](#)
- [U.S. Import and Export Price Indexes](#)

All BLS News Releases

- [Access to and Use of Leave](#)
- [American Time Use Survey](#)
- [Annual Pay Levels in Metropolitan Areas \(Discontinued\)](#)
- [Average Annual Pay by State and Industry \(Discontinued\)](#)
- [Bargaining Activity \(Annual\)](#)

Employment Situation Archived News Releases

The Employment Situation news release presents data from the [Current Employment Statistics](#) and [Current Population Survey](#) programs.

Caution

Data in archived news releases may have been revised in subsequent releases. The latest data, including any revisions, may be obtained from the databases accessible on the program homepages:

- » [Current Employment Statistics: databases](#)
- » [Current Population Survey: databases](#)

On This Page

LINKS TO ARCHIVE COPIES OF THE EMPLOYMENT SITUATION NEWS RELEASES

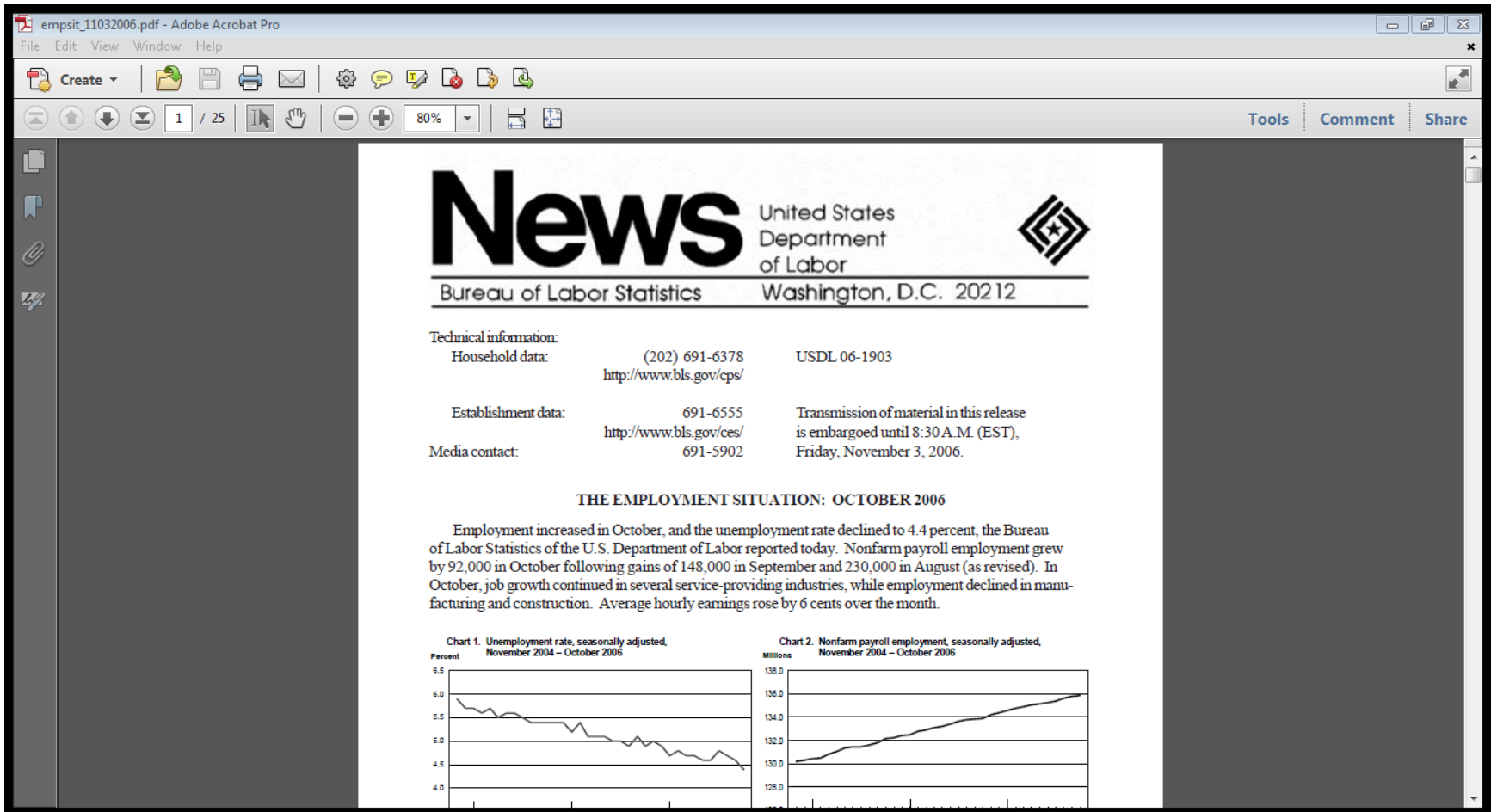
- | | | |
|-----------------------------------|------------------------|------------------------|
| » Current edition | » 2007 | » 2000 |
| » 2013 | » 2006 | » 1999 |
| » 2012 | » 2005 | » 1998 |
| » 2011 | » 2004 | » 1997 |
| » 2010 | » 2003 | » 1996 |
| » 2009 | » 2002 | » 1995 |
| » 2008 | » 2001 | » 1994 |

Current Edition of Employment Situation

- The current edition of The Employment Situation news release is always posted at www.bls.gov/news.release/empcit.nr0.htm.

2013 Employment Situation

- July 2013 ([HTML](#)) ([PDF](#))
- June 2013 ([HTML](#)) ([PDF](#))
- May 2013 ([HTML](#)) ([PDF](#))
- April 2013 ([HTML](#)) ([PDF](#))
- March 2013 ([HTML](#)) ([PDF](#))
- February 2013 ([HTML](#)) ([PDF](#))



Source: http://www.bls.gov/news.release/archives/empsit_11032006.pdf

The difficulty of finding vintage data

- ▶ Agencies historically wrote over the data, as the computing storage costs were high
- ▶ Libraries discarded news releases when the final versions were published



FRASER

Federal Reserve Archival System for Economic Research

<http://fraser.stlouisfed.org>

The screenshot shows the FRASER website interface. At the top left is the FRASER logo with the tagline 'FEDERAL RESERVE ARCHIVE | DISCOVER ECONOMIC HISTORY'. To the right is a search bar with 'all titles authors' filters and an 'Advanced Search' link. Below the search bar is a navigation menu with links for 'Data & Statistics', 'Federal Reserve Collections', 'All Titles', 'Topics', 'Timeline', 'Authors', and 'Ask a Librarian'. The main content area is divided into three columns. The left column features 'SPECIAL COLLECTIONS' with links to 'Brookings Institution: Papers from the Committee on the History of the Federal Reserve', 'Archival collection on the Federal Reserve System in the mid-1950s.', 'First and Second Banks of the United States', and 'William McChesney Martin Jr. Document Collection'. The middle column has 'FEATURED' and 'WHAT'S NEW' sections. The 'FEATURED' section includes 'AUG 01 Records of the Federal Reserve System' and 'JUL 31 Treasury-Federal Reserve Accord'. The 'WHAT'S NEW' section includes 'AUG 16 Annual Reports of the Federal Reserve Bank of Atlanta' and 'AUG 01 Employment and Payrolls'. The right column displays 'TOP DOWNLOADS' with items like 'Economic Indicators: May 2013 (3.5M)', 'Employment Situation: 1973-11-02 - October 1973 (1.3M)', 'Banking and Monetary Statistics 1914-1941: 1943 (5.1M)', 'Federal Reserve Bulletin: October 1982 (22.5M)', and 'Macroeconomics of the Great Depression (2.1M)'. At the bottom right is a 'Tweets' section showing a tweet from 'St Louis Fed FRASER @FedFRASER' about the 19th Amendment.

FRASER
FEDERAL RESERVE ARCHIVE | DISCOVER ECONOMIC HISTORY

all titles authors Advanced Search
What are you looking for?

Data & Statistics Federal Reserve Collections All Titles Topics Timeline Authors Ask a Librarian

SPECIAL COLLECTIONS

Brookings Institution:
Papers from the Committee on
the History of the Federal
Reserve

Archival collection on the Federal
Reserve System in the mid-
1950s.

First and Second Banks of the
United States

Original documents from the
formation of the First and Second
Banks of the United States.

Meltzer, A History of the Federal
Reserve Volume 1, 1913-1951

Available source documents cited
by the author.

William McChesney Martin Jr.
Document Collection

Selected documents from his
papers and other related
collections.

FEATURED

AUG 01 Records of the Federal Reserve System

A collection of archival records of the Federal Reserve
System, from the National Archives at College Park, MD.

JUL 31 Treasury-Federal Reserve Accord

A collection of archival documents relating to the 1951
Treasury-Federal Reserve Accord, which was seen as a
step forward in Fed independence.

WHAT'S NEW

AUG 16 Annual Reports of the Federal Reserve Bank of Atlanta

Annual reports of the Federal Reserve Bank of Atlanta are
now available for the years 1915-2000.

AUG 01 Employment and Payrolls

Issues of Employment and Payrolls, published by the
Bureau of Labor Statistics from 1935 through 1954, have
now been posted.

TOP DOWNLOADS

Economic Indicators: May 2013
(3.5M)

Employment Situation: 1973-11-
02 - October 1973 (1.3M)

Banking and Monetary Statistics
1914-1941: 1943 (5.1M)

Federal Reserve Bulletin: October
1982 (22.5M)

Macroeconomics of the Great
Depression (2.1M)

Tweets

Follow

St Louis Fed FRASER @FedFRASER 2h

The 19th Amendment is ratified
Aug 18, 1920, granting women
the right to vote. Explore women's
economic history
here<http://bit.ly/13qevAc>

Types of documents available on FRASER

- ▶ Publications of the Board of Governors of the Federal Reserve System
- ▶ Publications of District Federal Reserve Banks
- ▶ Statements and speeches of Fed policymakers
- ▶ Archival materials of Fed policymakers
- ▶ Government data publications
- ▶ Statistical releases
- ▶ Congressional hearings
- ▶ Books
- ▶ Reports by various organizations





SPECIAL COLLECTIONS

Brookings Institution:
Papers from the Committee on
the History of the Federal
Reserve

Archival collection on the Federal
Reserve System in the mid-
1950s.

First and Second Banks of the
United States

Original documents from the
formation of the First and Second
Banks of the United States.

Meltzer, A History of the Federal
Reserve Volume 1, 1913-1951

Available source documents cited
by the author.

William McChesney Martin Jr.
Document Collection

Selected documents from his
papers and other related
collections.

FEATURED

AUG 01 Records of the Federal Reserve System

A collection of archival records of the Federal Reserve
System, from the National Archives at College Park, MD.

JUL 31 Treasury-Federal Reserve Accord

A collection of archival documents relating to the 1951
Treasury-Federal Reserve Accord, which was seen as a
step forward in Fed independence.

WHAT'S NEW

AUG 16 Annual Reports of the Federal Reserve Bank of Atlanta

Annual reports of the Federal Reserve Bank of Atlanta are
now available for the years 1915-2000.

AUG 01 Employment and Payrolls

Issues of Employment and Payrolls, published by the
Bureau of Labor Statistics from 1935 through 1954, have
now been posted.

TOP DOWNLOADS

Economic Indicators: May 2013
(3.5M)

Employment Situation: 1973-11-
02 - October 1973 (1.3M)

Banking and Monetary Statistics
1914-1941: 1943 (5.1M)

Federal Reserve Bulletin: October
1982 (22.5M)

Macroeconomics of the Great
Depression (2.1M)

Tweets



St Louis Fed FRASER
@FedFRASER

2h

The 19th Amendment is ratified
Aug 18, 1920, granting women
the right to vote. Explore women's
economic history
here <http://bit.ly/13qevAc>

Home > Topics > Data and Statistical Publications

Data and Statistical Publications

Data publications, as well as statistical releases from several sources such as the Board of Governors of the Federal Reserve System, and government agencies such as the Bureau of Labor Statistics.

Related Topics:

- [Data Publications](#) (101 items)
- [Statistical Releases](#) (26 items)

Sort by: [Date](#) / [Title](#)

Showing Items: 1 - 25 of 121

Show: [All](#)



All Bank Statistics 1896 - 1955

Date: 1959
Authors: Board of Governors of the Federal Reserve System (U.S.)

Annual Report of the Board of Governors of the Federal Reserve System

Availability: 1914 to 2011
Authors: Board of Governors of the Federal Reserve System (U.S.)

Annual Report of the Comptroller of the Currency

Availability: 1863 to 1980
Authors: United States. Office of the Comptroller of the Currency

Employment Situation

Description:

The Employment Situation news release presents data from the Current Population Survey (household survey) and the Current Employment Statistics Survey (establishment survey). The publication presents a summary the data from the two surveys, followed by data presented in tables. Archived news releases are available on the website of the Bureau of Labor Statistics for [1994-present](#).

Availability:

1973 to 1994

[Browse Issues](#)

[All Tables, Charts, and Articles](#)

[About this Publication](#)

1970s

1980s

1990s

[Show All Issues](#)

1973

[1973-11-02](#)

October 1973
(1.3M)

[1973-12-07](#)

November 1973
(1.3M)

1974

[1974-01-04](#)

December 1973
(1.0M)


[1974-02-01](#)

January 1974

bls_employnews_197409.pdf - Adobe Acrobat Pro
File Edit View Window Help

Create [Icons]
1 / 18 [Navigation] 125% [Zoom] [Tools] [Comment] [Share]

NEWS



U. S. DEPARTMENT OF LABOR BUREAU OF LABOR STATISTICS

Washington, D. C. 20212
Contact: J. Bregger (202) 961-2633
961-2472
961-2542
K. Hoyle (202) 961-2913
home: 333-1384

USDL - 74-549
FOR RELEASE: Transmission Embargo
10:00 A. M. (EDT)
Friday, October 4, 1974

THE EMPLOYMENT SITUATION: SEPTEMBER 1974

Widespread increases in unemployment raised the Nation's unemployment rate to 5.8 percent in September compared with 5.4 percent in August, it was reported today by the Bureau of Labor Statistics of the U. S. Department of Labor. Since last October, when the unemployment rate had receded to a 3-1/2-year low, the number of unemployed persons has risen by 1.2 million.

Total employment (as measured by the monthly sample survey of households)

bls_employnews_197409.pdf - Adobe Acrobat Pro
 File Edit View Window Help
 Create [Icons]
 8 / 18 [Navigation] 125% [Zoom] [Tools] [Comment] [Share]

HOUSEHOLD DATA

HOUSEHOLD DATA

Table A-2. Major unemployment indicators, seasonally adjusted

| Selected categories | Number of unemployed persons (in thousands) | | Unemployment rates | | | | | |
|---|---|------------|--------------------|----------|-----------|-----------|-----------|------------|
| | Sept. 1973 | Sept. 1974 | Sept. 1973 | May 1974 | June 1974 | July 1974 | Aug. 1974 | Sept. 1974 |
| Total, 16 years and over | 4,240 | 5,312 | 4.7 | 5.2 | 5.2 | 5.3 | 5.4 | 5.8 |
| Males, 20 years and over | 1,513 | 1,947 | 3.0 | 3.4 | 3.5 | 3.5 | 3.8 | 3.9 |
| Females, 20 years and over | 1,482 | 1,834 | 4.8 | 5.1 | 5.1 | 5.2 | 5.2 | 5.7 |
| Both sexes, 16-19 years | 1,245 | 1,531 | 14.3 | 15.8 | 15.6 | 16.2 | 15.3 | 16.7 |
| White, total | 3,330 | 4,313 | 4.2 | 4.7 | 4.8 | 4.8 | 4.8 | 5.3 |
| Males, 20 years and over | 1,237 | 1,603 | 2.8 | 3.1 | 3.2 | 3.3 | 3.5 | 3.5 |
| Females, 20 years and over | 1,146 | 1,473 | 4.3 | 4.7 | 4.8 | 4.8 | 4.8 | 5.3 |
| Both sexes, 16-19 years | 947 | 1,237 | 12.2 | 14.0 | 13.9 | 13.9 | 13.3 | 15.2 |
| Negro and other races, total | 934 | 1,024 | 9.2 | 9.5 | 8.8 | 9.4 | 9.2 | 9.8 |
| Males, 20 years and over | 274 | 342 | 5.4 | 6.3 | 6.5 | 5.9 | 6.3 | 6.7 |
| Females, 20 years and over | 332 | 357 | 8.1 | 8.0 | 6.9 | 8.0 | 8.0 | 8.3 |
| Both sexes, 16-19 years | 328 | 325 | 33.7 | 33.5 | 30.3 | 35.3 | 31.4 | 32.4 |
| Household heads | 1,381 | 1,806 | 2.7 | 3.0 | 3.1 | 3.0 | 3.1 | 3.4 |
| Married men, spouse present | 829 | 1,106 | 2.1 | 2.2 | 2.6 | 2.6 | 2.6 | 2.8 |
| Full-time workers | 3,185 | 4,133 | 4.2 | 4.6 | 4.7 | 4.8 | 4.8 | 5.3 |
| Part-time workers | 1,029 | 1,176 | 7.7 | 8.8 | 8.9 | 8.6 | 8.7 | 8.8 |
| Unemployed 15 weeks and over ¹ | 768 | 614 | .9 | 1.0 | 1.0 | 1.0 | 1.0 | 1.1 |
| State insured ² | 1,608 | 2,207 | 2.6 | 3.3 | 3.4 | 3.4 | 3.3 | 3.4 |
| Labor force time lost ³ | -- | -- | 5.1 | 5.7 | 5.6 | 5.7 | 5.8 | 6.4 |
| OCCUPATION⁴ | | | | | | | | |
| White-collar workers | 1,336 | 1,536 | 2.0 | 2.2 | 2.1 | 2.2 | 2.1 | 2.6 |

Grouping tables across time

FRASER FEDERAL RESERVE ARCHIVE | DISCOVER ECONOMIC HISTORY

all titles authors Advanced Search

What are you looking for?

Data & Statistics Federal Reserve Collections All Titles Topics Timeline Authors Ask a Librarian

Employment Situation

Description:
The Employment Situation news release presents data from the Current Population Survey (household survey) and the Current Employment Statistics Survey (establishment survey). The publication presents a summary the data from the two surveys, followed by data presented in tables. Archived news releases are available on the website of the Bureau of Labor Statistics for 1994-present .

Availability:
1973 to 1994

Browse Issues **All Tables, Charts, and Articles** About this Publication

1970s
1980s
1990s
Show All Issues

1973

1973-11-02
October 1973
(1.3M)

1973-12-07
November 1973
(1.3M)

1974

1974-01-04
December 1973
(1.0M)

1974-02-01
January 1974

Grouping tables across time

Employment Situation

Description:

The Employment Situation news release presents data from the Current Population Survey (household survey) and the Current Employment Statistics Survey (establishment survey). The publication presents a summary the data from the two surveys, followed by data presented in tables. Archived news releases are available on the website of the Bureau of Labor Statistics for 1994-present .

Availability:

1973 to 1994

[Browse Issues](#)

[All Tables, Charts, and Articles](#)

[About this Publication](#)

In order to aid in the retrieval of information from this publication, significant tables, charts, and/or articles have been extracted and can viewed individually or across a span of issues.

Showing Pages **1 - 25 of 72**

Filter

search

View Single Release

View All ▾

go

[Employment Situation](#)

[Employment Status of the Noninstitutional Population by Sex and Age, Seasonally Adjusted](#)

[Explanatory Note](#)

[Labor Force Status of the Noninstitutional Population by Age, Sex, Race, and Hispanic Origin Using 1970 and 1980 Population Estimates, 1981 Annual Averages](#)

Grouping tables across time

Major Unemployment Indicators, Seasonally Adjusted

Unemployment by Sex and Age, Seasonally Adjusted

Reason for Unemployment

Employment Status of Male Vietnam Era Veterans

Employment Status of the Black and Hispanic-Origin Population

Reason for Unemployment ✕

Download this page from:

1973-11-02

Download this page in groups:

- October 1973-December 1974 (6.8M)**
- January 1975-December 1979 (25.1M)
- January 1980-December 1984 (29.5M)
- January 1985-December 1989 (29.3M)
- January 1990-December 1993 (23.3M)

 About · Contact · FAQs · RSS · Subscribe · Legal · Privacy

more

Grouped table: Reason for Unemployment, October 1973-December 1974

49987_1970-1974.pdf - Adobe Acrobat Pro
File Edit View Window Help

Create [Icons]
1 / 14 [Navigation] 138% [Zoom] [Tools] [Comment] [Share]

1973-11-02 | October 1973

Table A-5: Unemployed persons by reason for unemployment

(Numbers in thousands)

| Reason for unemployment | Oct. 1972 | Oct. 1973 | Seasonally adjusted | | | | | Oct. 1973 |
|-----------------------------|--------------|--------------|---------------------|--------------|--------------|--------------|---------------|--------------|
| | | | Oct. 1972 | June 1973 | July 1973 | Aug. 1973 | Sept. 1973 | |
| Number of unemployed | | | | | | | | |
| Lost last job | 1,651 | 1,218 | 1,988 | 1,713 | 1,584 | 1,609 | 1,659 | 1,467 |
| Left last job | 708 | 692 | 685 | 659 | 663 | 631 | 666 | 671 |
| Reentered labor force | 1,508 | 1,284 | 1,450 | 1,203 | 1,301 | 1,381 | 1,308 | 1,236 |
| Never worked before | 603 | 570 | 638 | 620 | 629 | 597 | 637 | 604 |
| Percent distribution | | | | | | | | |
| Total unemployed | 100.0 | 100.0 | 100.0 | 100.0 | 100.0 | 100.0 | 100.0 | 100.0 |
| Lost last job | 36.9 | 32.4 | 41.8 | 40.8 | 37.9 | 38.1 | 38.9 | 36.9 |
| Left last job | 15.8 | 18.4 | 14.4 | 15.7 | 15.9 | 15.0 | 15.6 | 16.9 |
| Reentered labor force | 33.7 | 34.1 | 30.5 | 28.7 | 31.1 | 32.7 | 30.6 | 31.1 |
| Never worked before | 13.5 | 15.1 | 13.4 | 14.8 | 15.1 | 14.2 | 14.9 | 15.2 |

Grouped table: Reason for Unemployment, October 1973-December 1974

49987_1970-1974.pdf - Adobe Acrobat Pro

File Edit View Window Help

Create

2 / 14 138%

Tools Comment Share

1973-12-07 | November 1973

Table A-5: Unemployed persons by reason for unemployment

(Numbers in thousands)

| Reason for unemployment | Nov. 1972 | Nov. 1973 | Seasonally adjusted | | | | | Nov. 1973 |
|---------------------------------|--------------|--------------|---------------------|--------------|--------------|---------------|--------------|--------------|
| | | | Nov. 1972 | July 1973 | Aug. 1973 | Sept. 1973 | Oct. 1973 | |
| Number of unemployed | | | | | | | | |
| Lost last job | 1,687 | 1,523 | 1,882 | 1,584 | 1,609 | 1,659 | 1,467 | 1,700 |
| Left last job | 629 | 790 | 646 | 663 | 631 | 666 | 671 | 813 |
| Reentered labor force | 1,377 | 1,215 | 1,375 | 1,301 | 1,381 | 1,308 | 1,236 | 1,215 |
| Never worked before | 574 | 528 | 621 | 629 | 597 | 637 | 604 | 572 |
| Percent distribution | | | | | | | | |
| Total unemployed | 100.0 | 100.0 | 100.0 | 100.0 | 100.0 | 100.0 | 100.0 | 100.0 |
| Lost last job | 39.5 | 37.5 | 41.6 | 37.9 | 38.1 | 38.9 | 36.9 | 39.5 |
| Left last job | 14.7 | 19.5 | 14.3 | 15.9 | 15.0 | 15.6 | 16.9 | 18.9 |
| Reentered labor force | 32.3 | 30.0 | 30.4 | 31.1 | 32.7 | 30.6 | 31.1 | 28.3 |
| Never worked before | 12.8 | 13.5 | 13.7 | 15.1 | 14.2 | 14.0 | 14.2 | 13.2 |

Grouped table: Reason for Unemployment, October 1973-December 1974

49987_1970-1974.pdf - Adobe Acrobat Pro
 File Edit View Window Help
 Create [Icons]
 3 / 14 138% [Icons] Tools Comment Share

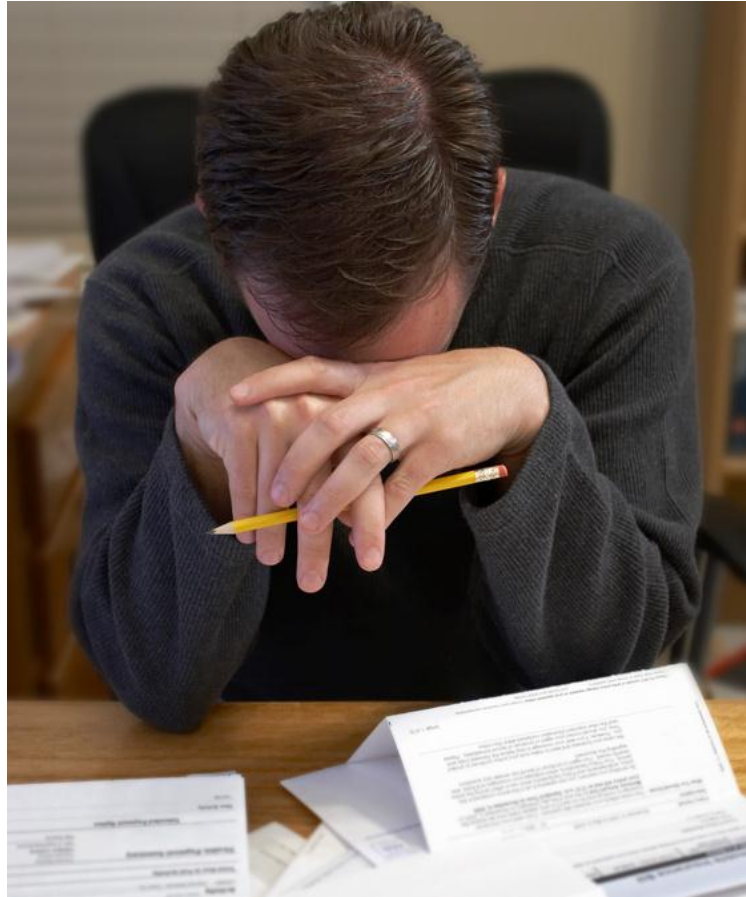
1974-01-04 | December 1973

Table A-5: Unemployed persons by reason for unemployment

(Numbers in thousands)

| Reason for unemployment | Dec. 1972 | Dec. 1973 | Seasonally adjusted | | | | | Dec. 1973 |
|--|-----------|-----------|---------------------|-----------|------------|-----------|-----------|-----------|
| | | | Dec. 1972 | Aug. 1973 | Sept. 1973 | Oct. 1973 | Nov. 1973 | |
| Number of unemployed | | | | | | | | |
| Lost last job | 1,897 | 1,818 | 1,846 | 1,609 | 1,659 | 1,467 | 1,700 | 1,770 |
| Left last job | 581 | 695 | 672 | 631 | 666 | 671 | 813 | 805 |
| Reentered labor force | 1,129 | 1,069 | 1,322 | 1,381 | 1,308 | 1,236 | 1,215 | 1,253 |
| Never worked before | 509 | 476 | 629 | 597 | 637 | 604 | 572 | 589 |
| Percent distribution | | | | | | | | |
| Total unemployed | 100.0 | 100.0 | 100.0 | 100.0 | 100.0 | 100.0 | 100.0 | 100.0 |
| Lost last job | 46.1 | 44.8 | 41.3 | 38.1 | 38.9 | 36.9 | 39.5 | 40.1 |
| Left last job | 14.1 | 17.1 | 15.0 | 15.0 | 15.6 | 16.9 | 18.9 | 18.2 |
| Reentered labor force | 27.4 | 26.3 | 29.6 | 32.7 | 30.6 | 31.1 | 28.3 | 28.4 |
| Never worked before | 12.4 | 11.7 | 14.1 | 14.2 | 14.9 | 15.2 | 13.3 | 13.3 |
| Unemployed as a percent of the civilian labor force | | | | | | | | |


There has to be a better way



ALFRED

Archival Federal Reserve Economic Data

<http://alfred.stlouisfed.org/>



[Categories](#) | [Sources](#) | [Releases](#) | [News](#) | [API](#) | [Published Data Lists](#) | [Help](#) Site

Archival Federal Reserve Economic Data

Economic Data Time Travel from the [St. Louis Fed's Economic Research Division](#).

ALFRED® allows you to retrieve vintage versions of economic data that were available on specific dates in history. In general, economic data for past observation periods are revised as more accurate estimates become available. As a result, previous vintages of data can be superseded and may no longer be available from various data sources. Vintage or real time economic data allows academics to reproduce others' research, build more accurate forecasting models, and analyze economic policy decisions using the data available at the time. For more information, read the [help page](#) and the presentation [ALFRED: Capturing data as it happens](#).

[Notify Me When New Series and Features Are Added](#)

Currently, vintage data are available for 140,826 series in 9 categories:

| | | |
|---|---|---|
| Academic Data (10,443) | Population, Employment, & Labor Markets (2,391) | International Data (76,629) |
| Money, Banking, & Finance (4,750) | Production & Business Activity (1,193) | Greenbook Projections (26) |
| National Accounts (16,546) | Prices (2,412) | U.S. Regional Data (32,645) |

The earliest vintage available is 1927-01-26 for series [Industrial Production Index](#).

Release Calendar

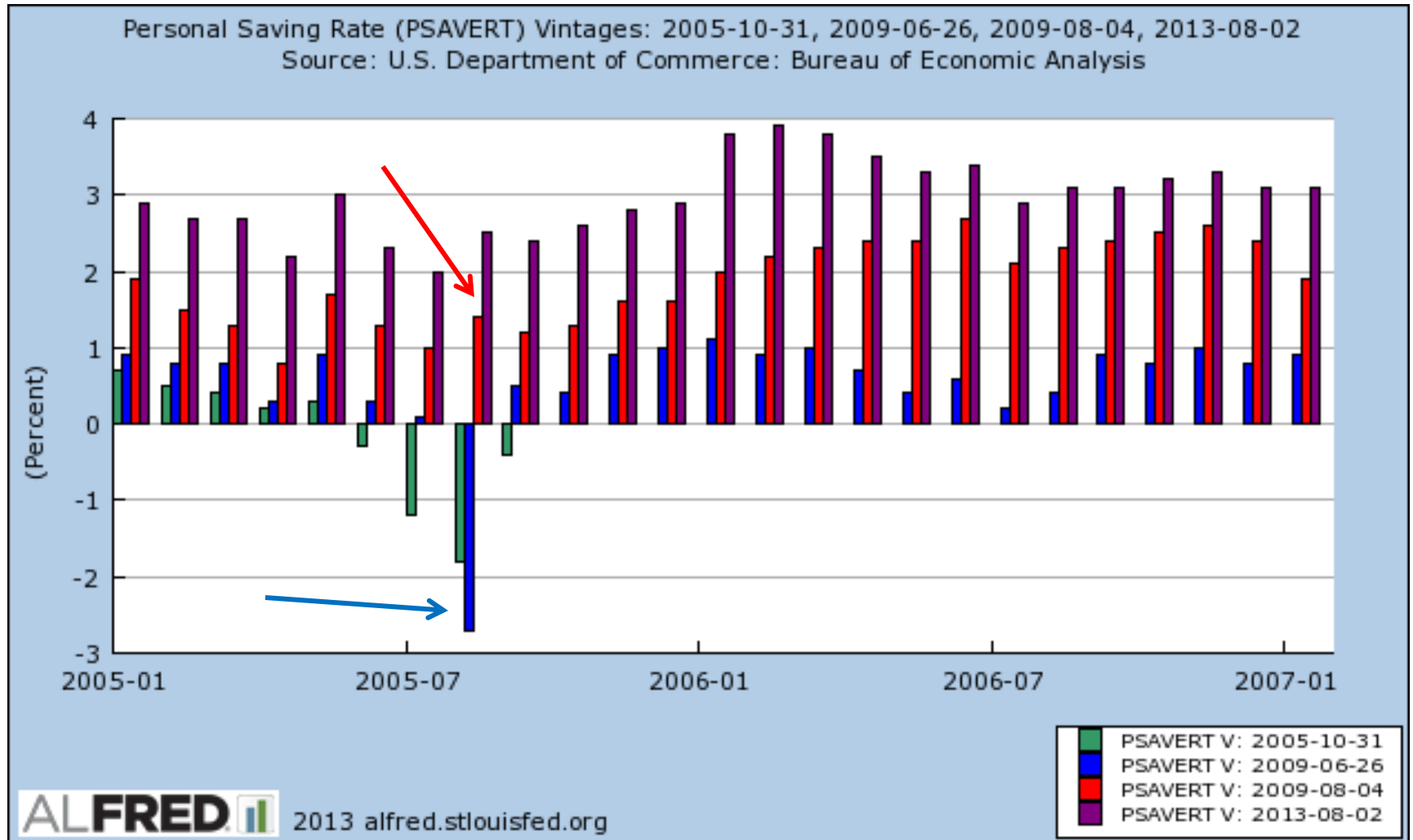
| Release Date | Release | Release Last Updated |
|--------------|--|----------------------|
| 2013-08-19 | BEA Regions Employment and Unemployment | 2013-07-19 |
| | Gasoline and Diesel Fuel Update | 2013-08-12 |
| | H.15 Selected Interest Rates | 2013-08-13 |
| | Regional and State Employment and Unemployment | 2013-07-19 |

How ALFRED works

- ▶ ALFRED was populated by collecting historical data for series in FRED, and ALFRED continues to be extended by capturing "expiring" FRED values when new ones are published.



Was there a negative saving rate in 2005?





13 Series

Select tags below to filter series. [Learn about tags.](#)

Related Tags

- ▶ Sources
- ▶ Releases
- ▶ Seasonal Adjustments
- ▶ Frequencies
- ▶ Geography Types
- ▶ Geographies
- ▶ Concepts

▼ All

- bea x 8
- nipa x 8
- sa x 7
- nsa x 6
- quarterly x 6
- annual x 5
- gdp x 5

Home > FRED® Economic Data

Search Results

Everything | FRED | Publications | Working Papers

Series matching search "personal saving".

Selected Series: Sort by: Popularity ▼

Personal Saving Rate

Percent, Monthly, Seasonally Adjusted Annual Rate 1959-01 to 2013-06 (Aug 2)

nation usa monthly sa bea nipa rate savings personal

Personal saving

Billions of Dollars

- Annual, Not Seasonally Adjusted 1929 to 2012 (Jul 31)
- Monthly, Seasonally Adjusted Annual Rate 1959-01 to 2013-06 (Aug 2)
- Quarterly, Seasonally Adjusted Annual Rate 1947:Q1 to 2013:Q2 (Jul 31)

nation usa nsa bea nipa gdp annual savings personal monthly sa quarterly

Personal saving as a percentage of disposable personal income

Percent

- Quarterly, Seasonally Adjusted Annual Rate 1947:Q1 to 2013:Q2 (Jul 31)
- Annual, Not Seasonally Adjusted 1929 to 2012 (Jul 31)

Tools

- Download Data
- View Data
- Notify Me of Updates
- Add to My Data List
- Vintage Series in ALFRED**

SHARE   

Tags

- nation x 109,745
- usa x 64,011
- sa x 43,068
- monthly x 41,186
- rate x 20,538
- bea x 14,137
- nipa x 10,584
- personal x 1,397
- savings x 372

Related Categories

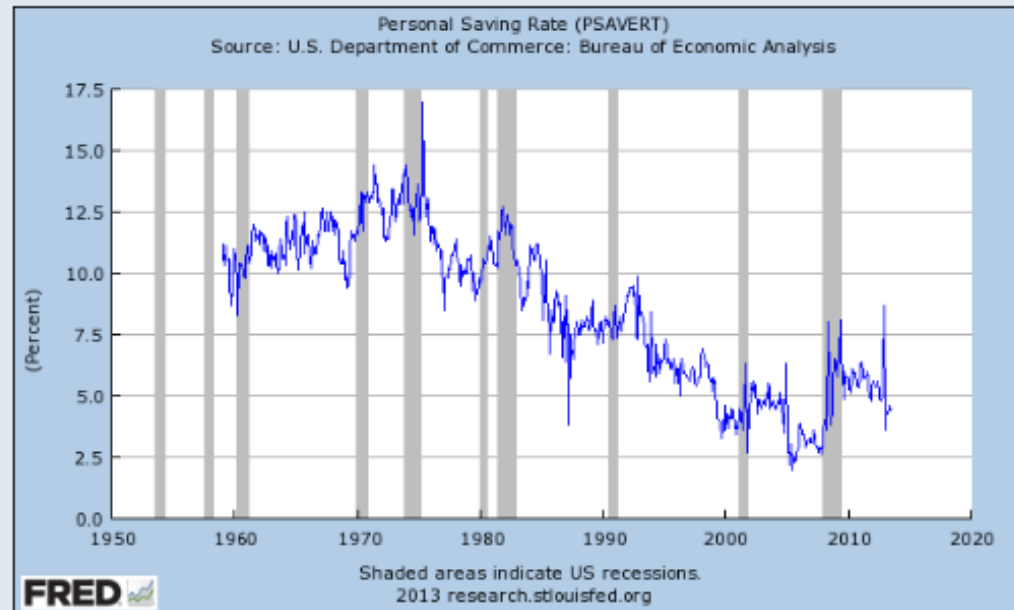
- National Accounts
- National Income & Product Accounts
- Domestic Capital Account (Saving & Investment)

Need Help?

Personal Saving Rate (PSAVERT)

2013-06: 4.4 Percent Last 5 Observations

Monthly, Seasonally Adjusted Annual Rate, Updated: 2013-08-02 7:53 AM CDT



 Edit Graph  Print  PDF  Save

Type: Line Size: Medium Range: Max Units: Levels

Notes: Growth Rate Calculations | US recession dates

Source: U.S. Department of Commerce: Bureau of Economic Analysis

Release: Personal Income and Outlays

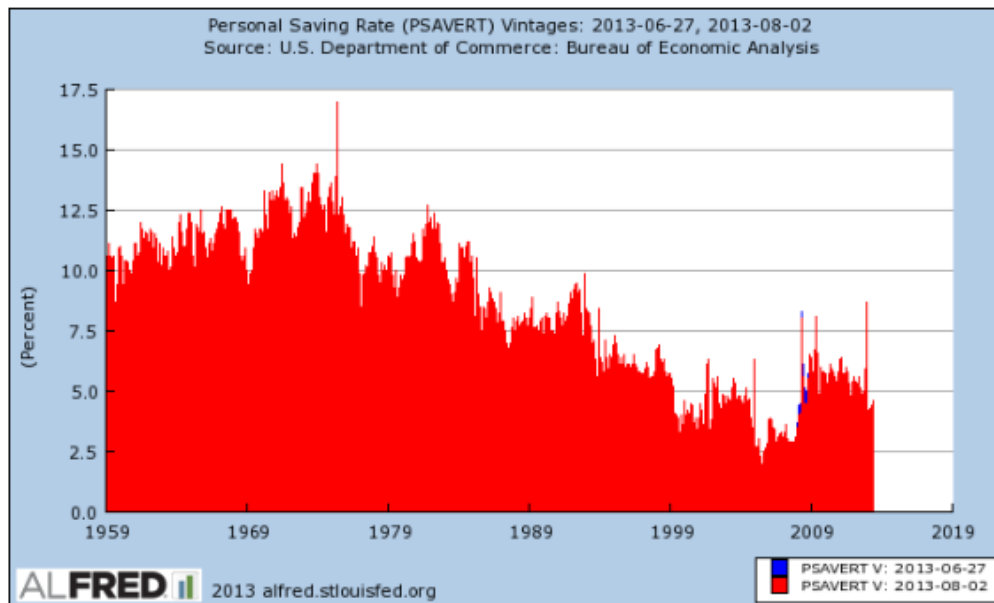
Notes:

Personal saving as a percentage of disposable personal income (DPI), frequently referred to as "the personal saving rate," is calculated as the ratio of personal saving to DPI.

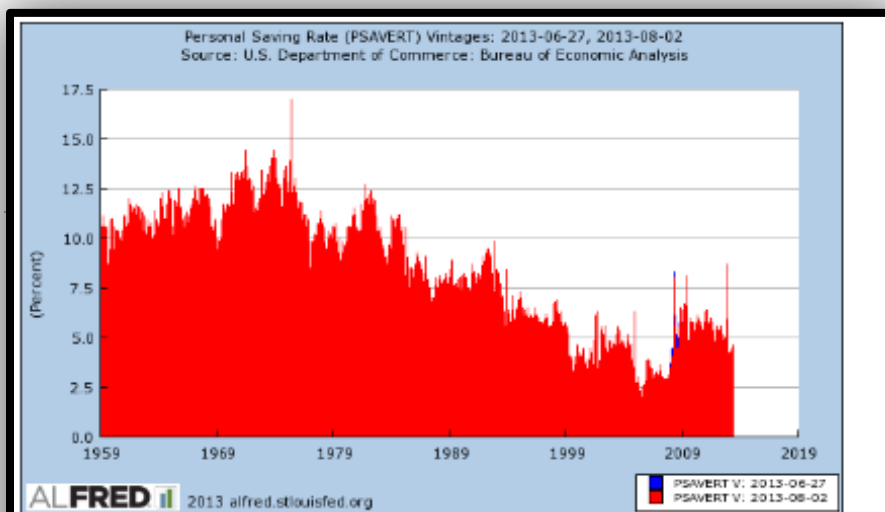
BEA Account Code: A072RC1

Personal Saving Rate (PSAVERT)

[Download Data](#) | [Add to My Data List](#) | [Current Series in FRED](#)



Graph: [Edit](#) | [Print](#) | [PDF](#) | [Save](#)



Settings

Graph

Bar Series 1: Personal Saving Rate (PSAVERT) Vintage: 2013-06-27

Bar Series 2: Personal Saving Rate (PSAVERT) Vintage: 2013-08-02

Scale: Color:

[Min, Max, and Avg Settings](#)

Observation Date Range: to [Copy to All Bar Series](#)

Observation Quick Range: Custom 1yr 5yrs 10yrs Max

Frequency:

(a) Personal Saving Rate (PSAVERT), Monthly, Seasonally Adjusted Annual Rate, 1959-01-01 to 2013-06-01

Units:

Enter an as-of Date: Or Select a Vintage:

[Create Your Own Data Transformation](#)

Add Data Series

▶ **Graph**

▶ **Bar Series 1: Personal Saving Rate (PSAVERT) Vintage: 2005-10-31**

▶ **Bar Series 2: Personal Saving Rate (PSAVERT) Vintage: 2009-06-26**

▶ **Bar Series 3: Personal Saving Rate (PSAVERT) Vintage: 2009-08-04**

▼ **Bar Series 4: Personal Saving Rate (PSAVERT) Vintage: 2013-08-02**

Scale: Color:

[Min, Max, and Avg Settings](#)

Observation Date Range: to [Copy to All Bar Series](#)

Observation Quick Range: Custom 1yr 5yrs 10yrs Max

Frequency:

(a) Personal Saving Rate (PSAVERT), Monthly, Seasonally Adjusted Annual Rate, 1959-01-01 to 2013-06-01

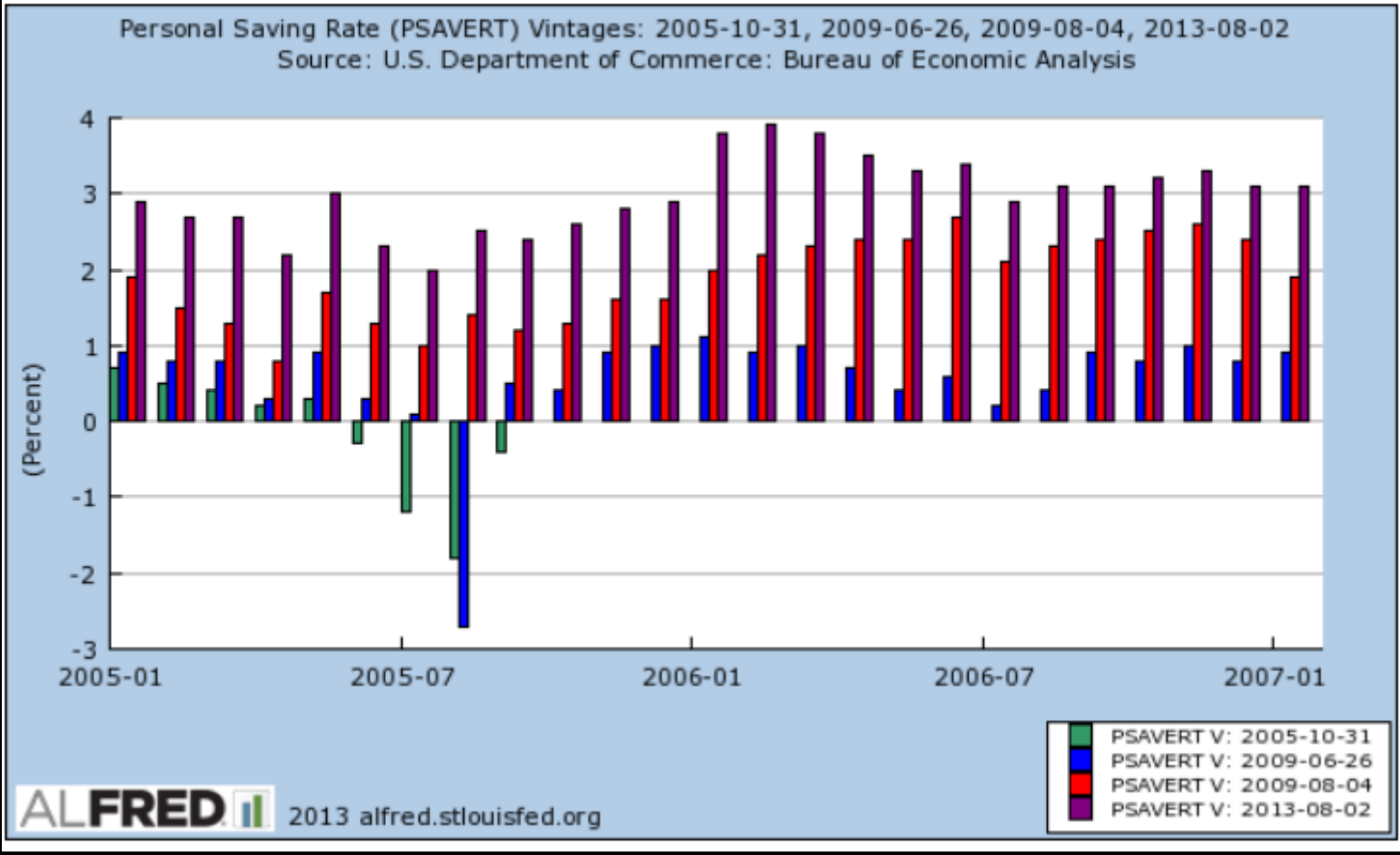
Units:

Enter an as-of Date: Or Select a Vintage:

[Create Your Own Data Transformation](#)

[Add Data Series](#)

[Download Data in Graph](#) | [Print](#) | [PDF](#) | [Link](#) | [View Saved Graphs](#) | [Save Graph](#) | [Help](#)



Call to action

- ▶ Donate news releases
- ▶ Include FRASER, ALFRED, and FRED in your libguides



Questions?



Pamela Campbell

pamela.d.campbell@stls.frb.org

Federal Reserve Bank of St. Louis



Upcoming Accidental Librarian Webinars

- ▶ September 25: Gov Info Tour with Alex Simons
- ▶ October 16-18: NCLA Biennial Conference

- ▶ Brought to you by the North Carolina Library Association's Government Resources Section. Join us!
<http://www.nclaonline.org/government-resources>

